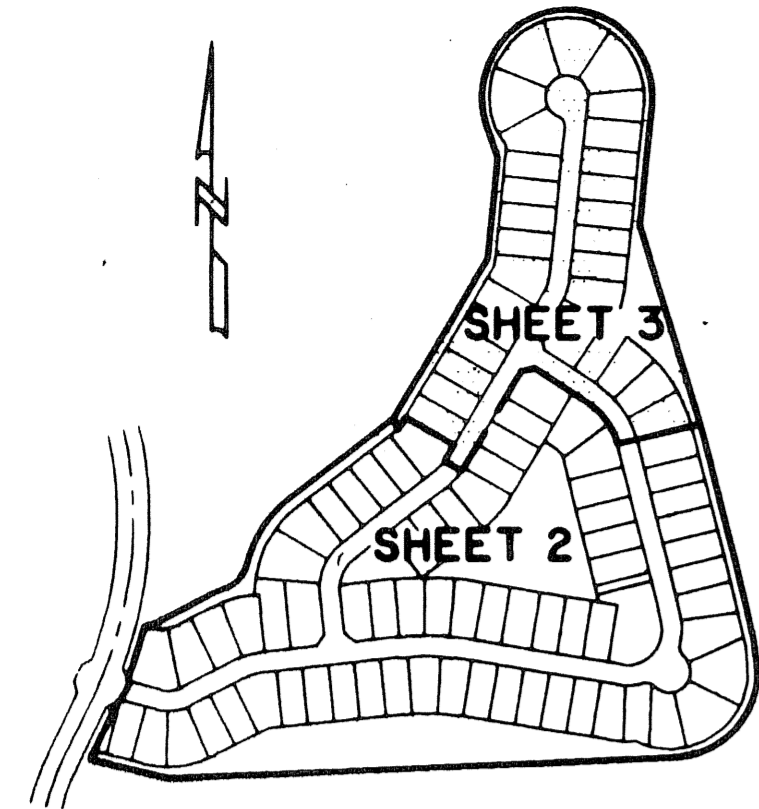


DELRAY TRAINING CENTER P.U.D. - PARCEL E

A PLANNED UNIT DEVELOPMENT
BEING A REPLAT OF TRACT "FD-2", DELRAY TRAINING CENTER - PLAT ONE, AS RECORDED IN
PLAT BOOK 86, PAGES 60 THROUGH 67, PUBLIC RECORDS OF PALM BEACH COUNTY,
FLORIDA, LYING IN SECTION 29, TOWNSHIP 46 SOUTH,
RANGE 42 EAST, PALM BEACH COUNTY, FLORIDA.



KEY MAP
NOT TO SCALE

FND P.B.C. BRASS DISK IN
CONCRETE MONUMENT
STAMPED SSP 17
'90 N=771503.695
'90 E=926246.621

(GRID)
N 89°36'32"W
3612.54'
(GROUND)

N 1/4 CORNER OF SECTION 21,
TOWNSHIP 46 S., RANGE 42 E.
FND P.B.C. BRASS DISK IN ROUND
CONCRETE MONUMENT STAMPED 16/21
'90 N=771479.030
'90 E=929859.146

'90 N=767202.507
'90 E=924371.273
POINT ALONG NORTH LINE OF DELRAY
TRAINING CENTER-PLAT ONE
FND. BRASS DISK IN 4"x4" CONCRETE
MONUMENT STAMPED P.S.M. 5019

DELRAY TRAINING CENTER
P.U.D.-TRACT "D"
(P.B. . PGS. -)

TRACT "W-7"
DELRAY TRAINING CENTER-
PLAT ONE
(P.B. 86, PGS. 60-67)

20' L.M.E.
(P.B. 86, PGS. 60-67)

N= 765685.7464
E= 925993.8726

20' L.M.E.
(P.B. 86, PGS. 60-67)

N= 765387.2073
E= 925964.2435

N= 765555.5413
E= 925609.1247

TRACT "W-8"
DELRAY TRAINING CENTER-
PLAT ONE
(P.B. 86, PGS. 60-67)

20' L.M.E.
(P.B. 86, PGS. 60-67)

(TRACT "G-1")
DELRAY TRAINING CENTER-
PLAT ONE
(P.B. 86, PGS. 60-67)

FND P.B.C. BRASS DISK
IN ROUND CONCRETE
MONUMENT STAMPED GAST
'90 N=763538.300
'90 E=931367.350

FND P.B.C. BRASS DISK
IN ROUND CONCRETE
MONUMENT STAMPED GATTO
'90 N=763501.631
'90 E=928321.893

(TRACT "G-3")
DELRAY TRAINING CENTER-
PLAT ONE
(P.B. 86, PGS. 60-67)

N= 764906.4033
E= 925350.0278

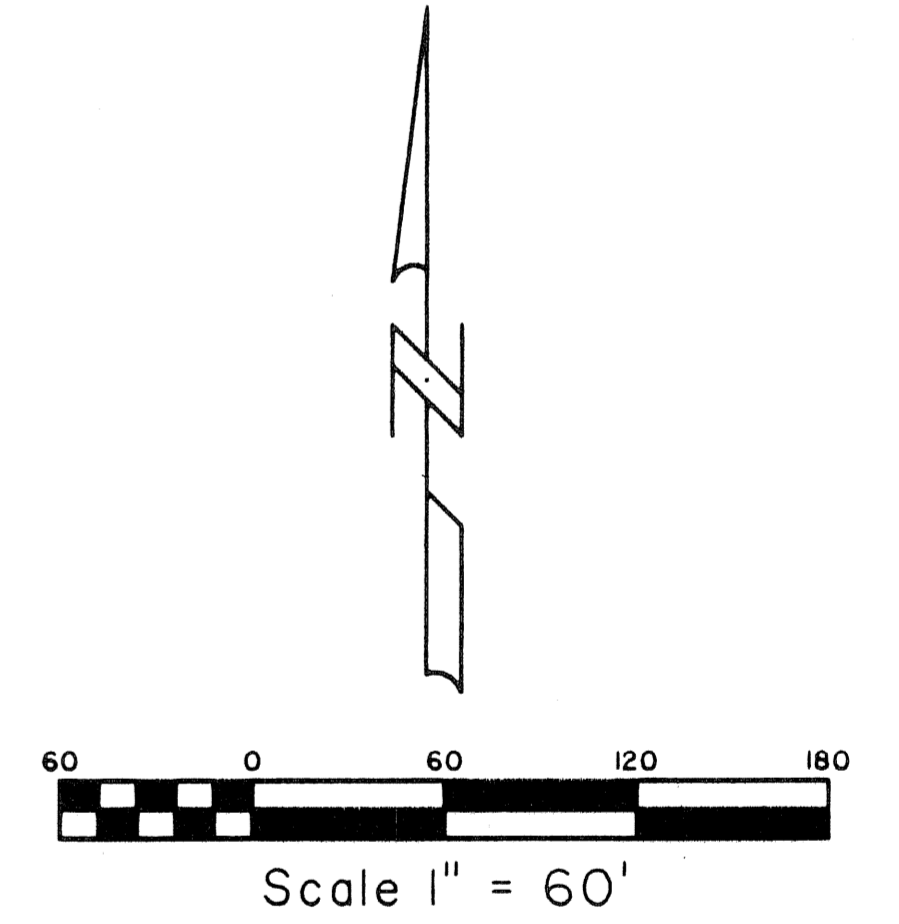
N= 764890.8707
E= 92616.6383

20' L.M.E.
(P.B. 86, PGS. 60-67)

CENTERLINE CURVE TABLE

| NUMBER | RADIUS | DELTA ANGLE | ARC LENGTH | CHORD DIRECTION | CHORD LENGTH |
|--------|--------|-------------|------------|-----------------|--------------|
| C1 | 100.00 | 40°45'45" | 71.14 | N 83°43'28" E | 69.65 |
| C2 | 113.00 | 20°42'05" | 40.83 | N 73°41'59" E | 40.61 |
| C3 | 675.00 | 15°17'06" | 180.07 | S 88°18'46" E | 179.54 |
| C4 | 113.00 | 113°10'08" | 223.19 | N 42°44'43" E | 188.64 |
| C5 | 200.00 | 42°43'59" | 149.17 | N 35°12'20" W | 145.73 |
| C6 | 113.00 | 24°51'36" | 49.03 | S 18°05'52" W | 48.65 |
| C7 | 113.00 | 2°24'09" | 42.21 | S 41°13'45" W | 41.97 |
| C8 | 113.00 | 59°18'24" | 116.97 | S 22°16'37" W | 111.81 |

COORDINATE NOTE:
STATE PLANE COORDINATES SHOWN ARE GRID DATUM, NAD 83 1990
ADJUSTMENT, FLORIDA EAST ZONE, COORDINATE SYSTEM 1983 STATE
PLANE, TRANSVERSE MERCATOR PROJECTION
LINEAR UNIT = US SURVEY FEET
ALL DISTANCES ARE GROUND
SCALE FACTOR = 1.000020427035
GROUND DISTANCE X SCALE FACTOR = GRID DISTANCE
BEARINGS AS SHOWN HEREON ARE GRID DATUM, NAD 83 1990
ADJUSTMENT, FLORIDA EAST ZONE.



DELRAY TRAINING CENTER P.U.D.
PAGE 151
FLOOD MAP# 215A
ZONING PUD
QUAD# 52
TAZ# 702
PUD NAME# Delray Training Center PUD



Landmark Surveying & Mapping Inc.
1850 Forest Hill Boulevard
Ph. (561) 433-5405 Suite 100 W.P.B. Florida
LB # 4396